


**Webinar di aggiornamento**

## Verso il nuovo Piano di Gestione e Sostenibilità del Centro Storico di Firenze

giovedì 29 aprile 2021 h15-18

L'evento è organizzato dall'Ufficio Firenze Patrimonio Mondiale e rapporti con l'UNESCO del Comune di Firenze con il supporto operativo dell'Associazione MUS.E e in collaborazione con HeRe Lab - Heritage Research.

Gli incontri si svolgeranno online sulla piattaforma Zoom. La partecipazione è gratuita con prenotazione obbligatoria fino ad esaurimento posti. Per ricevere il link di connessione occorre prenotarsi scrivendo a: [firenzepatrimoniomondiale@comune.fi.it](mailto:firenzepatrimoniomondiale@comune.fi.it)

Info sul progetto  
[www.atlaswh.eu](http://www.atlaswh.eu)  
[atlaswh.firenzepatrimoniomondiale.it](http://atlaswh.firenzepatrimoniomondiale.it)


 ©Firenze World Heritage  
03-05-2021

### Local training for professionals, Atlas.WH project: a view to a new Management and Sustainability Plan of Historic Centre of Florence

On Thursday the 29th of April the Municipality of Florence - Firenze Patrimonio Mondiale e Rapporti con UNESCO office, MUS.E association in collaboration with HeRe Lab of the University of Florence, organized the local training for professionals on Zoom platform. The course entitled "A view to a new Management and Sustainability Plan of Historic Centre of Florence" was related to the new Management and Sustainability Plan of the WHS and the Atlas.WH project.

[READ MORE](#)

## CITIES' NEWS



©Consortorio de Santiago

10-05-2021

### Installation of optical fibre in the historic centre of Santiago de Compostela, as a test to extend it to the rest of heritage urban centres of Galicia

The Consorcio de Santiago coordinates the implementation of optical fibre in the old city of Santiago de Compostela, following an agreement that also includes the municipality of Santiago and the regional government of Galicia.

The first step was the development of a catalogue of technical solutions, followed by the launch of a public consultation with fibre operators. The Catalogue of solutions should serve for laying actions of the optical fibre network in urban environments of special protection and historical cities of Galicia. It was developed by Antega, the public operator of ReteGal, and the Directorate-General for Cultural Heritage to address a problem present throughout the European Union for which no solution had been offered until now.

[READ MORE](#)


©Consortorio de Santiago

12-05-2021

### Open debate in Santiago: limit the bike in the historic city or expand its use with difficult specific lanes?

The Announcement by the City Council of the processing of a new mobility ordinance that would limit the use of the bicycle in the historic centre has opened a wide controversy. The rule considers the pedestrian use of the historic centre and the sidewalks of the city as a priority. Opposite of this, there are those who defend the need to bet decisively on this type of vehicle, enhancing its use at all points. The Santiago Consortium is part of the commission of study of the mobility ordinance.

[READ MORE](#)


12-05-2021

### New concession for the Praça Infante D. Henrique car park reserves spaces for local residents

The opening of an international public tender, limited by pre-qualification, has been approved for the new concession for the Praça do Infante D. Henrique car park, wherein the current concession terminates in mid-October. Porto City Council has stipulated the minimum reservation of 136 parking spaces, primarily reserved for local residents and some for logistical needs. The concessionaire will have to pay the municipality a minimum revenue of 30 percent, in accordance with the amounts currently charged.

[READ MORE](#)

## CAPITALIZATION



03-05-2021

### Managing Heritage in a Changing World: new online CPD course launched in Edinburgh

Edinburgh World Heritage has launched a new online training platform to deliver training on sustainable historic city management. Titled 'Managing heritage in a changing world', the free online course spans five modules and explores the key questions around how Edinburgh's World Heritage Site can be best managed in the context of our vibrant, fast-changing capital city.

[READ MORE](#)


©Filipa Brito

19-05-2021

### The Municipality of Porto promotes study to discover "Porto's style" of living

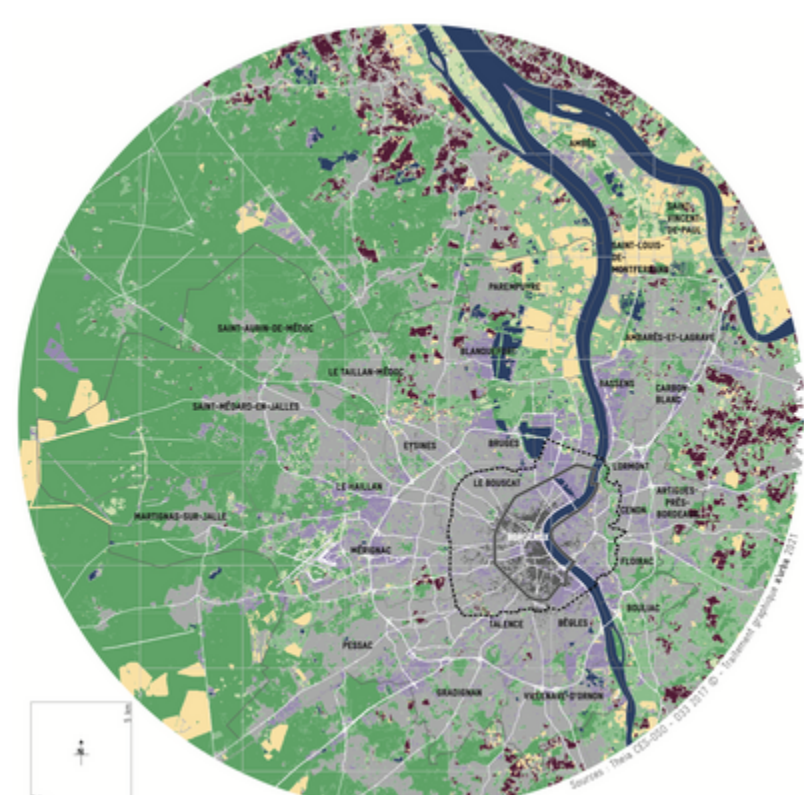
This study will identify and evaluate the supply and demand on the market, since 2018, mapping new projects, real estate market tendencies, assess the impacts of the Covid-19 pandemic, the impact of the affordable rent initiatives and will consult consumers - residents or visitors - as regards rental, buying and selling real estate.

[READ MORE](#)


12-05-2021

### Protection and revaluation of historic centre: opening day

On Tuesday the 11<sup>th</sup> of May the inaugural day of the training course called "Consolidation of historical buildings" took place online. The main themes of the course, which reflect some important themes discussed in the context of the Atlas.WH project, are: the point of view of conservation, consolidation, administration, the project and the planning of interventions in the historic centre, improving the quality of living, safety and accessibility, encouraging residency.

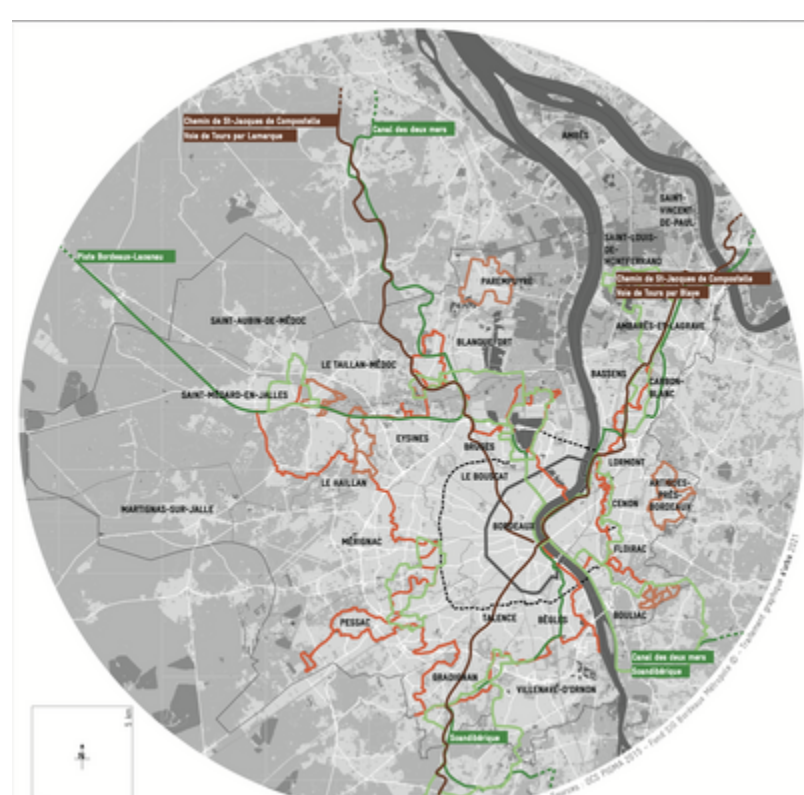
[READ MORE](#)


©A'urba

12-05-2021

### Cartographic indicators for a good management of Bordeaux, port of the Moon

Following the atlas of the 5 partners of the Atlas.WH project, the urban planning agency of Bordeaux and Aquitaine is producing a series of maps which highlight different actions and strategies that apply to the core zone. This series of cartographic indicators emphasizes the transversality of heritage through the diversity of thematics participating in the management of the property and that management exceed limits of core and buffer zone.

[READ MORE](#)


©A'urba

12-05-2021

### Cultural pedestrian and cycle paths for Bordeaux, port of the Moon and beyond

The update of the management plan for Bordeaux, port of the Moon has made it possible to highlight actions in progress and also new action proposals. Among them, the creation of a common offer of cycle and pedestrian paths in the core zone of Bordeaux, Port de la Lune, its buffer zone and more generally the Bordeaux metropolis.

[READ MORE](#)

03-05-2021

### Firenze Greenway: discover the urban countryside

Twenty kilometers in three rings to be covered on foot or by bicycle to discover the urban countryside, to show the green side of the green city, hidden in the historic and built city.

It is Firenze Greenway, the project promoted by the Municipality of Florence and the cultural association Firenze Greenway, created with the contribution of the Department of Tourism as part of the tender for the promotion of unusual Florence, also in line with the objectives of the Atlas.WH project.

[READ MORE](#)
